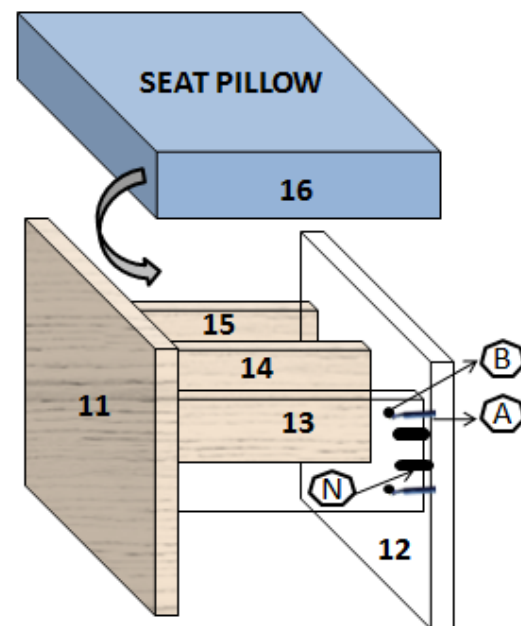
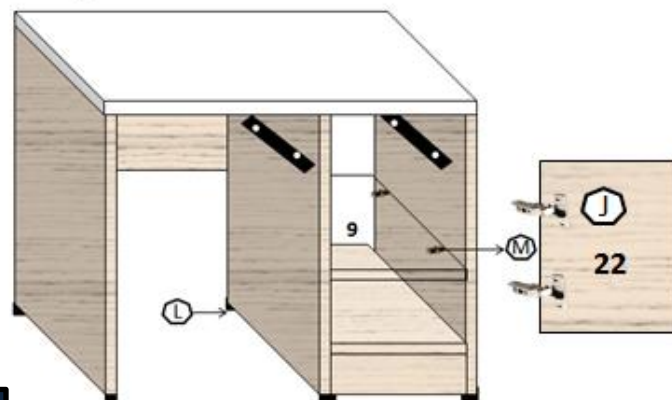
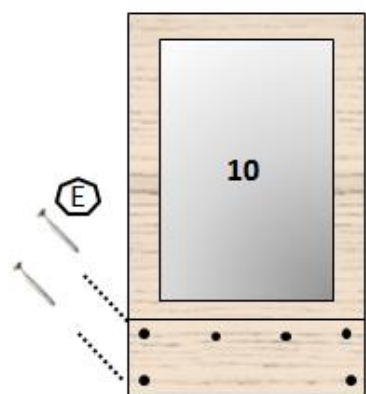
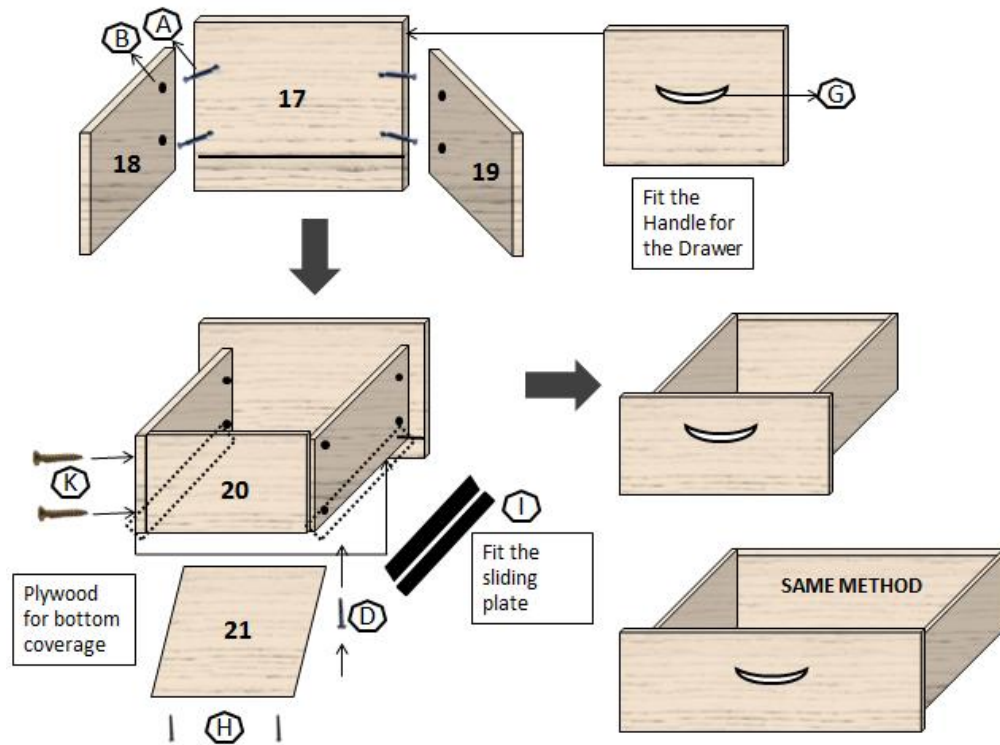


MIRROR





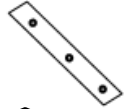











NAD FURNITURE

DRAWER ASSEMBLY



Final Product
NAD 467

NAD FURNITURE

 A 38	 B 38
 C 4	 D 16
 E 6	 F 22
 G 3	 H 50
 I 4	 J 2
 K 8	 L 6
 M 12	 N 4

ASSEMBLY INSTRUCTIONS

1. Fit the no1 with 2 (fix guiding plate C using D) ,3(fix guiding plate C using D) using A,B & F.
2. Then fit no 4 and 5 with 2 and 3 using A ,B and F. Then fix 6 to the top of 4 & 5 A,B & F.
3. Then fix 7 as per drawing using A&B screws. Then fit 8 (fix guiding plate C using D) using A,B & F.
4. After place the 9 using M screws. finally fit the mirror 10 to that assembly as per drawing using E screws . Fix the plywood for backside of 2 & 3 using iron needles N.
5. Then fit 15,16,17 to 13 & 14 using A,B & N screws. Then place the seat pillow over that.
6. Fix 17(fix Handle G) with 18 and 19 using A & B screws. Then fix 20 to it using K screws. Then place the plywood along with sliding plate I using K & D. The same method is used for big drawer.